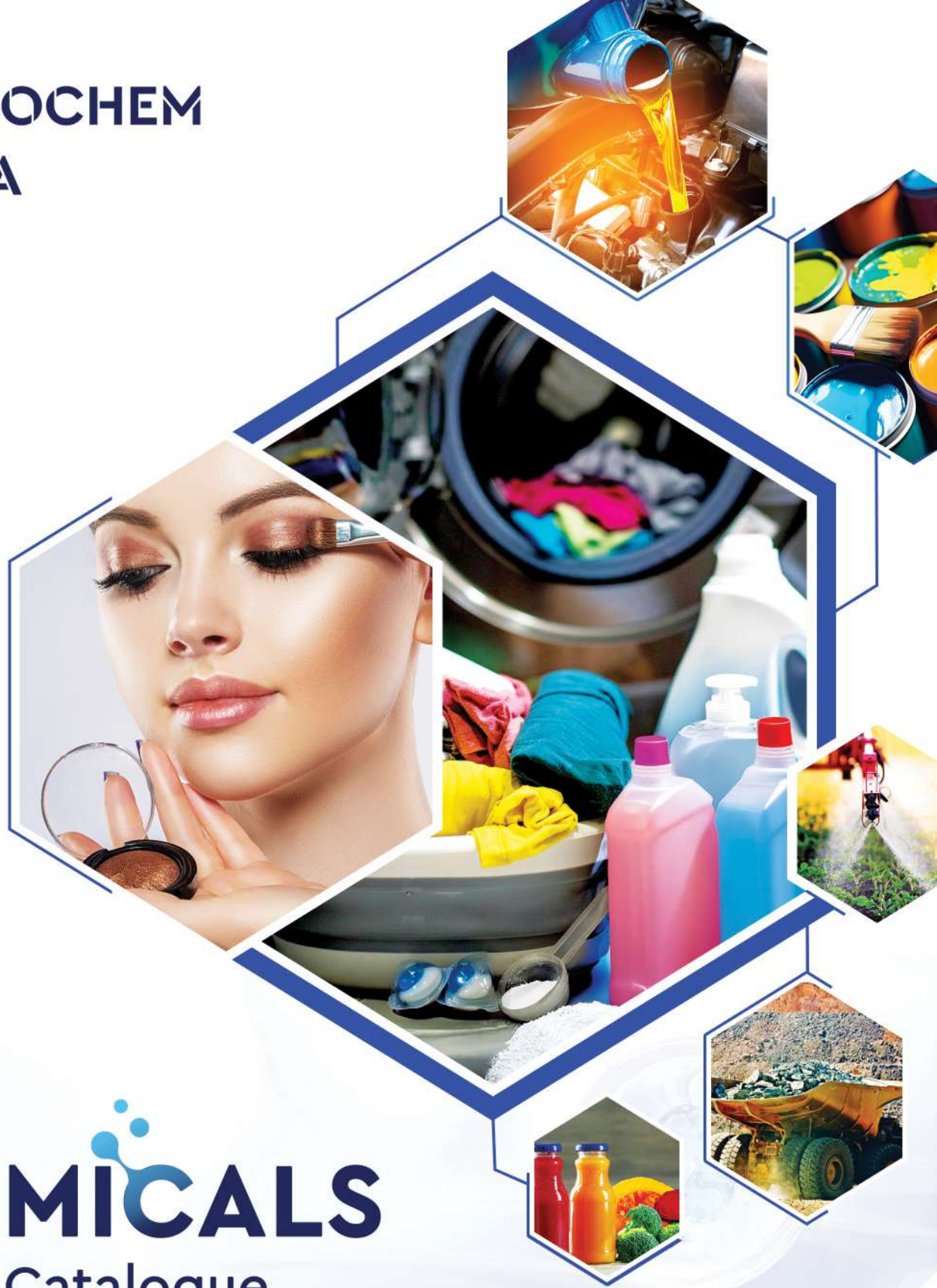


**SOMOCHEM**  
**SARA**



# CHEMICALS

## Product Catalogue

**40+**  
Years Since

Your Trusted **High Quality**  
**Source of Chemicals**



e-Catalogue

Unit No: 3704 and 3705, Platinum Tower, Cluster I, Jumeirah Lakes Towers, Dubai, UAE





WITH 40+ YEARS OF EXPERTISE, SOMOCHEM IS A TRUSTED LEADER IN POLYMER AND CHEMICALS DISTRIBUTION, SERVING KEY INDUSTRIES LIKE PLASTICS, PACKAGING, SOAPS & DETERGENTS, PERSONAL CARE, EDIBLE OIL, FOOD & BEVERAGE ACROSS SUB-SAHARAN AFRICA. BACKED BY A STRONG NETWORK AND GLOBAL COORDINATION, WE DELIVER RELIABLE, AGILE AND MARKET DRIVEN SOLUTION.

## GLOBAL PARTNERSHIPS, LOCAL ADVANTAGE



### END-TO-END SOLUTIONS

From sourcing the finest raw materials to delivering them on time, Somochem is with you at every step. Our just-in-time solutions reduce lead times and ensure smooth production cycles.



### TECHNO-COMMERCIAL EXPERTISE

Our team's in-depth understanding of both the technical and commercial aspects of our products allows us to provide advisory services that ensure the right product reaches the right customer.



### GLOBAL PARTNERSHIPS

Our strategic alliances with leading global manufacturers give us a wide variety of top-quality products to meet clients unique business requirements.



### DOOR-TO-DOOR SERVICES

With strategically located warehousing facilities, we offer safe and efficient storage options for our clients, ensuring consistent supply and availability of products when they're needed most.

“ Through common alignment with these values as an organization, we strengthen growth with purpose. ”

- The Late Former Chairman, Mr. Ramchand Mohinani

SALES IN OVER  
**35+ COUNTRIES**

CLIENTS SERVED  
**700**

PRODUCTS HANDLED  
**350KT**

STOCK POINTS  
**10+**

# JIT FOOTPRINT



## DRIVING INNOVATION, BUILDING PARTNERSHIPS, AND LEADING SUSTAINABILITY

What sets us apart? It's more than just our products. Our strength lies in a deeply ingrained culture of reliable, agile, and customer-centricity. With over two decades of experience and a network that spans across continents, Somochem is known for delivering not just products but solutions.

Our story is built on empowering businesses with solutions that truly make a difference. With strategically positioned warehouses, we provide **Just-in-Time** solutions and **DDP services**.



WAREHOUSES ACROSS  
SUB-SAHARAN AFRICA



JUST-IN-TIME (JIT)  
SUPPLY CHAIN SOLUTIONS



HOLDING CAPACITY  
50KT



## JIT Locations

- Djibouti
- Kenya
- South Sudan
- Tanzania
- Uganda
- Rwanda
- Burundi
- Zambia
- Malawi
- Mozambique
- Zimbabwe
- South Africa
- Ghana
- Nigeria

- Registered Office
- Representatives
- Warehouse



# CHEMICAL RANGE



We specialize in providing a **COMPREHENSIVE RANGE OF HIGH-QUALITY CHEMICALS TAILORED** to meet the needs of various industries, including manufacturing, agriculture, pharmaceuticals, food and beverage, textiles, and construction.

Our extensive portfolio includes essential raw materials, specialty chemicals, and advanced formulations, all sourced from trusted global suppliers.

Whether you are looking for bulk supply or custom chemical solutions, Somochem is your go-to partner for reliable, high-performance chemicals that drive success and innovation in your industry.

★ **Specialty Chemicals** ★ **Essential Raw Materials** ★ **Advanced Formulations**

## PERSONAL CARE



Personal care is a necessity in today's world as it is used in grooming and improving one's appearance. Closely aligned with these products are the appropriate chemicals that make them effective and safe to use.

Our extensive portfolio of specialty chemicals helps you to :

Enhance product performance and stability, ensure safety and compliance, develop innovative, high-quality products.

Our portfolio includes Raw Materials for :

Antioxidants & Preservatives | Aroma Ingredients | Conditioners & Emollients | Emulsifiers & Thickeners | Hair Care Ingredients | Stabilisers & pH Regulators

**White Oil (TECH, USP)/Petroleum Jelly**  
**Fatty Alcohols (CETOSTEARYL ALCOHOL, CETYL ALCOHOL, STEARYL ALCOHOL)**  
**Ethoxylates (LA, NP, PEG, CSA)**  
**Glycerine**  
**Stearic Acid Triple Pressed**

**Glycerol Monostearate**  
**CAPB/CDEA**  
**Sorbitol 70%**  
**Mono Propylene Glycol**  
**SLES 70%/SLS Needles**  
**DEA/MEA/TEA**

**PARAFFIN WAX/MC WAX**  
**POLYSORBATE 20/60/80**  
**PEG 200/400/6000**  
**Paraffin Wax/MC Wax**  
**Talc Powder**

# CHEMICAL RANGE

## HOME & INSTITUTIONAL CARE



Homecare products consist of various chemicals used in cleaning and performing other chores within homes. Surfactants act as the main cleansing agents as they help solubilize the dirt and grease for easy rinsing. These chemicals are also used to remove tough stains and oily deposits and enzymes work on organic stains for efficient stain elimination.

In the home care and industrial cleaning industry, cleanliness and sanitation are paramount. SOMOCHEM's range of high-quality chemicals helps you achieve superior results, ensuring:  
Enhanced cleaning efficacy, improved safety, effective disinfection and deodorization.

Our portfolio includes :

Bleaching Agents | Emulsifiers | Chelating Agents | Foam Control Agents | Surfactants | Wetting Agents | Stabilisers.

**Caustic Soda (Flakes, Pearls, Solid)**

**LAB/LABSA**

**Soda Ash Light/Dense**

**Lauryl Alcohol Ethoxylates**

**Sodium Silicate**

**Soap Noodles**

**SSA (Natural, Synthetic)**

**Sodium Tripolyphosphate (STPP)**

**Color Speckles**

**Talc Powder/Zeolite 4A**

**Nonyl Phenol Ethoxylates**

**Potassium Hydroxide (KOH 90%) Flakes**

## PLASTICIZERS



Plasticizers are additives taken into polymers to enhance their ductility, processability, and endurance. These plasticizers make the material softer and easier to process, which is needed for such applications as cables, floor covering, and packaging materials. One main ingredient used is calcium carbonate which is used as a filler.

**DOP/DBP/DOTP/DINP/DEHCH**

**Methylene Chloride**

**Calcium Carbonate**



# CHEMICAL RANGE

## MINING & WATER TREATMENT



We provide a wide range of high-performance chemicals and materials tailored for the mining industry. Our offerings include essential raw materials, specialty chemicals, and advanced formulations designed to enhance extraction processes, mineral beneficiation, and environmental sustainability.

Our portfolio also include high-quality water treatment chemicals, like bleaching agent, coagulants, flocculants, biocides, water softeners, corrosion inhibitors, and more to support efficient and effective water treatment.

**Sodium Metabisulfite**

**Hydrogen Peroxide**

**Activated Carbon**

**Hydrochloric Acid/ Nitric Acid**

**Oxalic Acid**

**EDTA**

**Soda Ash (Dense/Light)**

**Calcium Hydroxide**

**Sulphuric Acid**

**Caustic Soda (Flakes/Pearls)**

**Calcium Hypochlorite**

**Polyaluminium Chloride**

**Ferric Sulphate**

**Sodium Hexametaphosphate**

**Trisodium Phosphate**

## PU INTERMEDIATES



PU Intermediates is the term used to describe chemicals that are essential for making polyurethane products which is a versatile material with high performance characteristics. Such intermediates as polyols and isocyanates are formed and react to form polyurethane. Polyols bring about elastic properties in the end product while isocyanates make the end product more rigid and strong.

**Methylene Chloride**

**Polyol**



# CHEMICAL RANGE

## FOOD & HUMAN NUTRITION



The importance of food and nutrition cannot be overemphasized as it forms the basis on which our body nutritionally feeds. There are many chemicals that are used in food products and all these chemicals are chosen to meet both safety and taste.

Our product portfolio is designed to help you:

Extend Shelf Life with Antioxidants and Preservatives | Improve Texture and Stability with Binders and Emulsifiers  
| Enhance Flavor Profiles with Flavor Enhancers | Optimize pH Levels with pH Regulators

**Sodium Bicarbonate/Acetic Acid**  
**Ammonium Bicarbonate**  
**Sodium Benzoate**  
**Dextrose Monohydrate/Anhydrous**  
**Phosphoric Acid 85% - Food/Tech**  
**Vit AD3/Vit A Palmitate & Acetate**

**Citric Acid Mono/Anhydrous**  
**Sodium Metabisulphite**  
**Corn Starch**  
**Liquid Glucose/Maltodextrin**  
**Sodium Acid Pyrophosphate**  
**Xanthan Gum/Guar Gum**

**Ascorbic Acid**  
**Potassium Sorbate**  
**Di Calcium Phosphate**  
**MonoCalcium Phosphate**  
**Monosodium glutamate**

## SOLVENTS



Solvents are liquids that dissolve a solute, resulting in a solution. They have a wide range of applications in chemistry, pharmaceuticals, and industry. Common solvents include water, ethanol, and acetone, each varying in their properties such as polarity, volatility, and ability to dissolve different substances.

**Acetic Acid (Glacial)**  
**Ethyl Acetate / Butyl Acetate**  
**Acetone/Butanol**  
**Isopropyl Alcohol (85% and Pure)**  
**N-Propanol**  
**Methanol**

**Diethylene Glycol / Monoethylene Glycol/Butyl Glycol Ether**  
**Xylene**  
**Methoxy Propanol**  
**MEK/MIBK**  
**Different Types of Solvent Blends**



# CHEMICAL RANGE

## PAINT, INK & COATINGS



Paints, inks, and coatings are used in almost every industry today, as they give the appearance, protection, and serviceability to various surfaces. The efficiency of these products mostly relies on the content of the chemicals involved in their production.

Paints consist of pigments, binders, and solvents for ease of application and durability. To enhance the color intensity and drying characteristics of inks, they contain dyes, resins, and solvents.

**Methyl Acrylate/Butyl Acrylate**  
**Titanium Dioxide – Anatase/Rutile**  
**Phthalic Anhydride/Maleic Anhydride**  
**Iron Oxide Yellow/Red/Others**  
**Methyl Acetate/Butyl Acetate**

**Ethyl Acetate**  
**Carbon Black/Solvents**  
**Refined Soybean Oil**  
**Alkyd Resins**  
**Printing Inks**

**Styrene Monomer**  
**Vinyl Acetate Monomer**  
**Paint Fillers**  
**Paint Driers**

## TEXTILE & LEATHERS



The use of chemicals in the treatment of leather and textiles is crucial in that a myriad of chemicals is used in the process. Tanning agents such as Basic Chromium Sulphate fix the leather and increase its durability and subsequent resistance to wear. Leather and textiles are accented with dyes and pigment chemicals that give them their color and brightness.

**Formic Acid**  
**Acetic Acid**  
**Nonyl Phenol Ethoxylated**  
**Hydrogen Peroxide**  
**Basic Chromium Sulphate**  
**Sodium Metabisulphite**

**Sodium Formate/Calcium Formate**  
**Sodium Bicarbonate**  
**Lauryl Alcohol Ethoxylated**  
**Ammonium Sulphate**  
**Oxalic Acid**



# CHEMICAL RANGE

## AGRO CHEMICALS



We offer a comprehensive range of plant protection products, expertly designed to meet the varied needs of fertilizer and agricultural professionals.

Our diverse portfolio includes:

Soil Conditioners to Enhance Soil Health and Fertility | Biofertilizers to Promote Sustainable Plant Growth | Plant Growth Regulators to Optimize Crop Development | Fertilizers in Various Forms, including Granules, Water Solubles, and Foliar Spray-ons, to Cater to different Application requirements

Our products work synergistically to Boost Crop Yields, Improve Plant Health, and Support Sustainable Agricultural Practices.

**PDCB**

**Mono Ammonium Phosphate**

**Sulphates**

**Phosphoric Acid**

**KOH 90%**

**Nonyl Phenol Ethoxylated**

**Phosphates**

## CONSOLIDATION CARGO



Through our consolidation services, we can combine multiple products into a single containers, enabling us to deliver customized solutions that precisely match each customer's unique needs and specifications.



# POLYMER RANGE



Our extensive network and **Strong Partnerships with Leading Polymer Producers** enable us to market and distribute a diverse portfolio of plastics to customers worldwide.

We are major distributors of high-quality polymers including **PE, PP, PS, PET, PVC, MB & Additives** and more across Africa, and globally.

## Sustainable Solutions:

We are dedicated to sustainability and strive to offer environmentally friendly solutions.

Discover the difference with Somochem – Your reliable partner in the global polymer market.

## Portfolio:



Polyethylene (PE)



Polypropylene (PP)



Polystyrene (PS)



Polyethylene Terephthalate (PET)



Polyvinyl Chloride (PVC)



Masterbatch & Additives (M&A)

## Major Suppliers:

ExxonMobil

Borouge

OQ

SCGC

BOREALIS

LYB LyondellBasell

LG Chem

ONGC Petro additions Limited

Reliance Industries Limited

Supreme Petrochem Ltd GLOBAL SUPPLIER OF STYRENICS

JADE PET resin

WKAI

Westlake

alpek

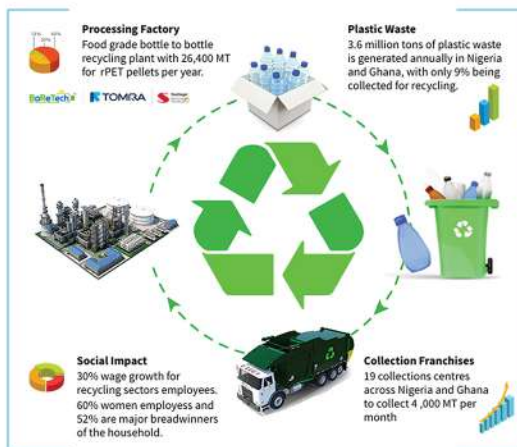
Formosa Plastics

天津渤海化工集团有限公司

SK geo centric

HYOSUNG





## CLOSING THE LOOP For Plastic Packaging

**Investment in Recycling:** Mohinani Group have invested over \$30 million in two closed-loop recycling plants producing food-grade PET.

We proudly offer high-quality plastic flakes in blue and white. These versatile flakes are ideal for packaging. Our food-grade rPET supports the circular economy by enabling the **Production of new bottles from Recycled Materials**, helping **Reduce Plastic Waste**.

### Our Products:

#### rPET Flakes

Testing Parameters	Unit	Method	Specification
Color Test	-	Visual	Clear & Light Blue
Moisture Content	%	ASTM D6980-12	<0.7
Flakes Size	%	ASTM D6913	≥95 (8 – 12mm)
Bulk Density	g/l	ASTM D1895	260 – 350
Contamination due to PVC	ppm	EN-15348 Annex D	<5
Contamination due to Wood	ppm	EN-15348 Annex D	<20
Contamination due to Label	ppm	EN-15348 Annex D	<20
Contamination due to Glue including Flakes	ppm	EN-15348 Annex D	<50
Intrinsic Viscosity	dl/g	ASTM D1238-13	≥0.71
pH	-	Internal	6.5 – 8.5
Metal	ppm	Visual Sorting	<5

#### rPET Pellets (Resin 100%)

Testing Parameters	Unit	Method	76 rPET	80 rPET	84 rPET
Intrinsic Viscosity	dl/g	ASTM D1238-13	0.76±0.02	0.80±0.02	0.84±0.02
Moisture Content	%	ASTM D6980-12	<0.2	<0.2	<0.2
Bulk Density	g/l	ASTM D1895-96	830 – 910	830 – 910	830 – 910
Color Measurement	*L	ASTM D 6290-19	70 ± 4	70 ± 4	70 ± 4
	*a		<-2	<-2	<-2
	*b		<3	<3	<3
No. of Chips/Grams	No.	Manual	53 ± 3	53 ± 3	53 ± 3
Particle Size	%	ASTM D1921-18	<0.05	<0.05	<0.05
Odour	-	Organoleptic	No Odor	No Odor	No Odor
AA	ppm	ASTM F2013-10	1 max	1 max	1 max
Benzene	ppb		10 Max	10 Max	10 Max





## CONTACT US

### Head Quarters



#### **Somochem DMCC**

Unit No: 3704 and 3705, Platinum Tower, Cluster I, Jumeirah Lakes Towers, Dubai, UAE

[info@somochem.com](mailto:info@somochem.com)

+971 4 422 0720

### Registered Offices



#### **Somochem Limited**

21, Nyerere Road, Inside Bora Ind. Compound, P.O. Box No: 40625, Dar Es Salaam, Tanzania.  
[rajesh@somochem.com](mailto:rajesh@somochem.com)  
+255 (0) 754 268 918



#### **Somochem (Uganda) Limited**

Plot 1-3, Nyondo Close, Warehouse-A, Bugolobi, P.O. Box No: 33969, Kampala, Uganda.  
[rajiv.hirani@somochem.com](mailto:rajiv.hirani@somochem.com)  
+256 753 759 265



#### **Somochem Djibouti FZCO** NEW

Djibouti International Tower F5-V455.  
[hemang.desai@somochem.com](mailto:hemang.desai@somochem.com)  
+254 739 999 070



#### **Somochem (Kenya) Limited**

310, Lunga Lunga Square, Lunga Lunga Road, Industrial Area, P.O. Box No: 11100 – 00400, Nairobi, Kenya.  
[hemang.desai@somochem.com](mailto:hemang.desai@somochem.com)  
+234 70806 58001



#### **Somochem Nigeria Limited**

1, Olorunfunmi Street, Off Kudirat Abiola Way, Behind Phillips Building, Ojota, Lagos-Nigeria.  
[vijay.sai@somochem.com](mailto:vijay.sai@somochem.com)  
+234 70 8065 8001



#### **Somochem (Ghana) Limited**

Plot No. 2, Block 5, Dadeban Road, North Industrial Area, P.O. Box No: 5334, KIA, Accra, Ghana.  
[manoj.mathew@somotexgh.com](mailto:manoj.mathew@somotexgh.com)  
+233 (0) 208 422 173



#### **Somochem Southern Africa PTY (Ltd)**

8 Uitsig Crescent, Durbanville, Cape Town, South Africa.  
[mark.domingo@somochem.com](mailto:mark.domingo@somochem.com)  
+27 (0) 78 535 8336



#### **SARA Offshore Services Limited**

Unit B, 19/F, Yardley Commercial Building, 3 Connaught Road West, Hong Kong.  
[sales.hk@sara-global.com](mailto:sales.hk@sara-global.com)  
+852 3589 6151



#### **Somochem India Pvt. Ltd**

501, 5th Floor, A-Wing, Trade Star, Andheri-Kurla Road, J.B Nagar, Andheri (East), Mumbai, India – 400059.  
[info@somochem.com](mailto:info@somochem.com)  
+91 22 6756 4900

Let's get Social :   | @somochemofficial



[www.somochem.com](http://www.somochem.com) | [info@somochem.com](mailto:info@somochem.com)

